



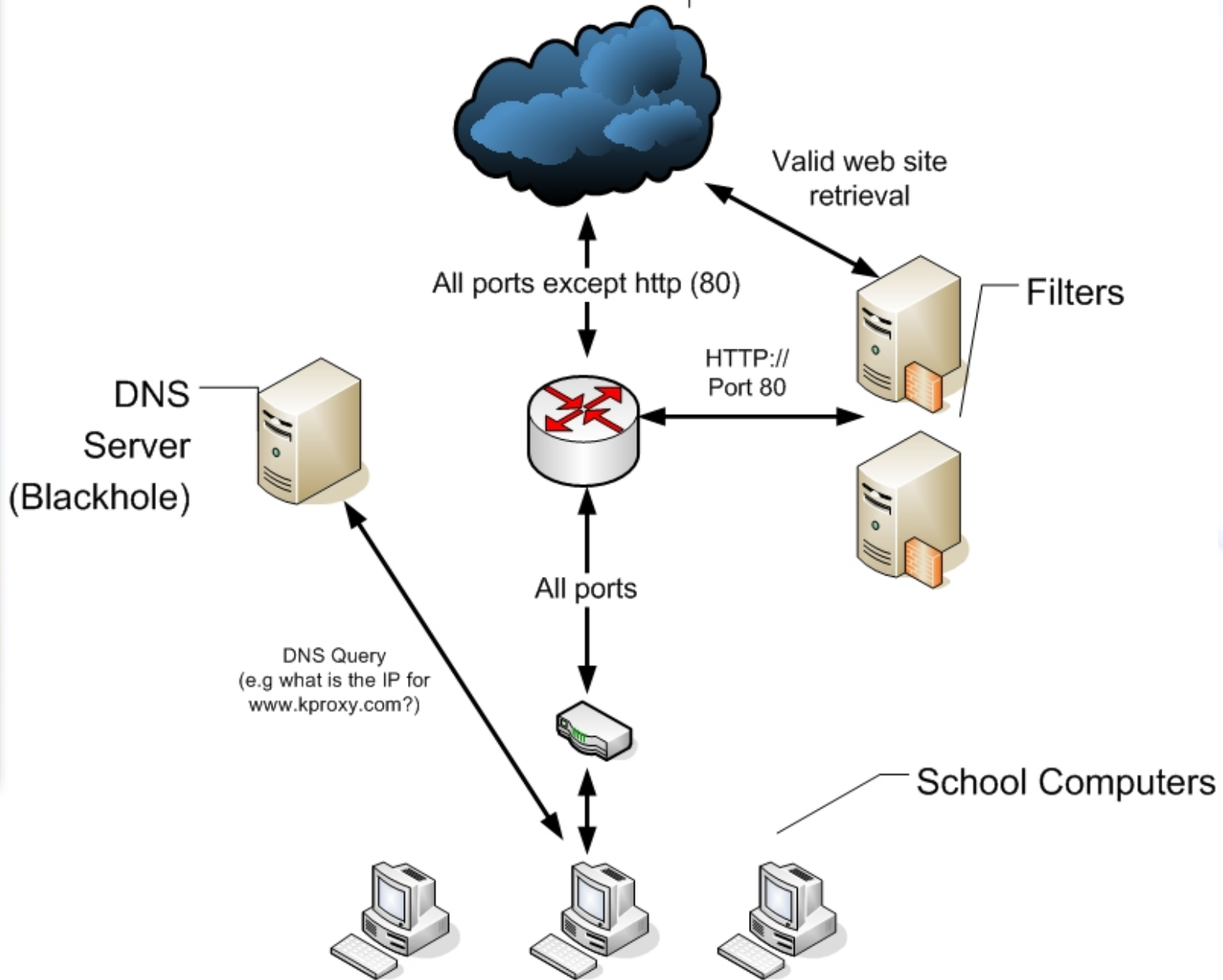
Filtering Overview



Service is the Solution



CONNECTIVITY



Service is the Solution



What gets filtered?

- Only HTTP port 80 traffic is filtered by the normal content filtering system.
- Sites or content are blocked/allowed based on categorization or specific blacklist/whitelist.
- Traffic on other ports is either handled via firewall or sometimes DNS Blackhole.
- DNS Blackhole is global in two regards –
 - One policy for everyone.
 - Blocks access to listed sites on all ports.
- Because it's global, not all sites Districts want added to the DNS Blackhole can be.

76 Content Filtering Categories

Abortion
Adult/Mature Content*
Alcohol*
Alternative Sexuality/Lifestyles*
Alternative Spirituality/Belief*
Art/Culture
Auctions
Audio/Video Clips
Blogs/Personal Pages
Brokerage/Trading
Business/Economy
Charitable Organizations
Chat/Instant Messaging*
Computers/Internet
Content Servers
E-mail
Education**
Entertainment
Extreme*
Financial Services
For Kids**
Gambling*
Games
Government/Legal
Greeting Cards
Hacking*

Health**
Humor/Jokes
Illegal Drugs*
Illegal/Questionable*
Internet Telephony
Intimate Apparel/Swimsuit*
Job Search/Careers
LGBT
Military
News/Media
Newsgroups/Forums
Non-viewable
Nudity*
Online Meetings
Online Storage
Open/Mixed Content*
Pay to Surf
Peer-to-Peer (P2P)*
Personals/Dating*
Phishing*
Placeholders
Political/Activist Groups
Pornography*
Potentially Unwanted Software*
Proxy Avoidance*
Radio/Audio Streams

Real Estate
Reference**
Religion
Remote Access Tools
Restaurants/Dining/Food
Search Engines/Portals
Sex Education
Shopping
Social Networking*
Society/Daily Living
Software Downloads
Sports/Recreation
Spyware Effects/Privacy Concerns*
Spyware/Malware Sources*
Suspicious
Tobacco*
Travel
TV/Video Streams
Vehicles
Violence/Hate/Racism*
Weapons*
Web Advertisements
Web Applications
Web Hosting*

*** Means currently blocked**

**** Means always allowed**



Service is the Solution



Q & A



Service is the Solution